

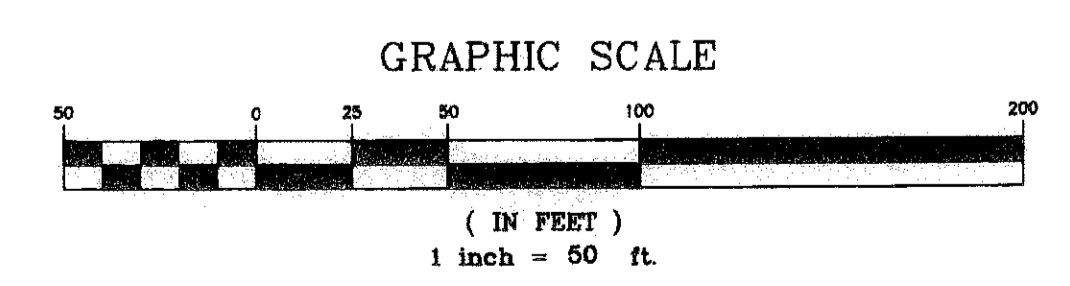
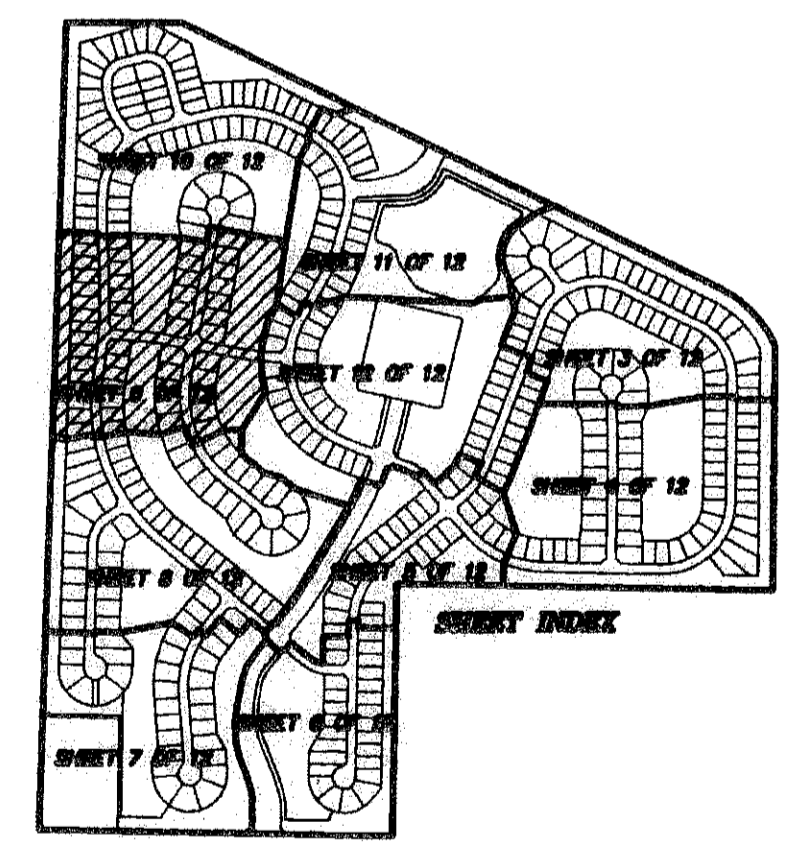
45

- LEGEND:**
- D= DELTA (CENTRAL ANGLE)
  - L= LENGTH
  - R= RADIUS
  - CB= CHORD BEARING
  - CD= CHORD DISTANCE
  - PSM= PROFESSIONAL SURVEYOR AND MAPPER
  - PLS= PROFESSIONAL LAND SURVEYOR
  - LAE= LIMITED ACCESS EASEMENT
  - MREE= MAINTENANCE ROOF AND EAVES EASEMENT
  - UE= UTILITY EASEMENT
  - DE= DRAINAGE EASEMENT
  - OS= OPEN SPACE
  - WMT= WATER MANAGEMENT TRACT
  - (R)= RADIAL
  - (NR)= NON-RADIAL
  - PG= PAGE
  - OR= OFFICIAL RECORD BOOK
  - P.B.C.U.E.= PALM BEACH COUNTY UTILITY EASEMENT
  - OR= OFFICIAL RECORD BOOK
  - PM= PERMANENT REFERENCE MONUMENT "LB 4318"
  - (UNLESS OTHERWISE NOTED)
  - = PERMANENT CONTROL POINT "LB 4318"

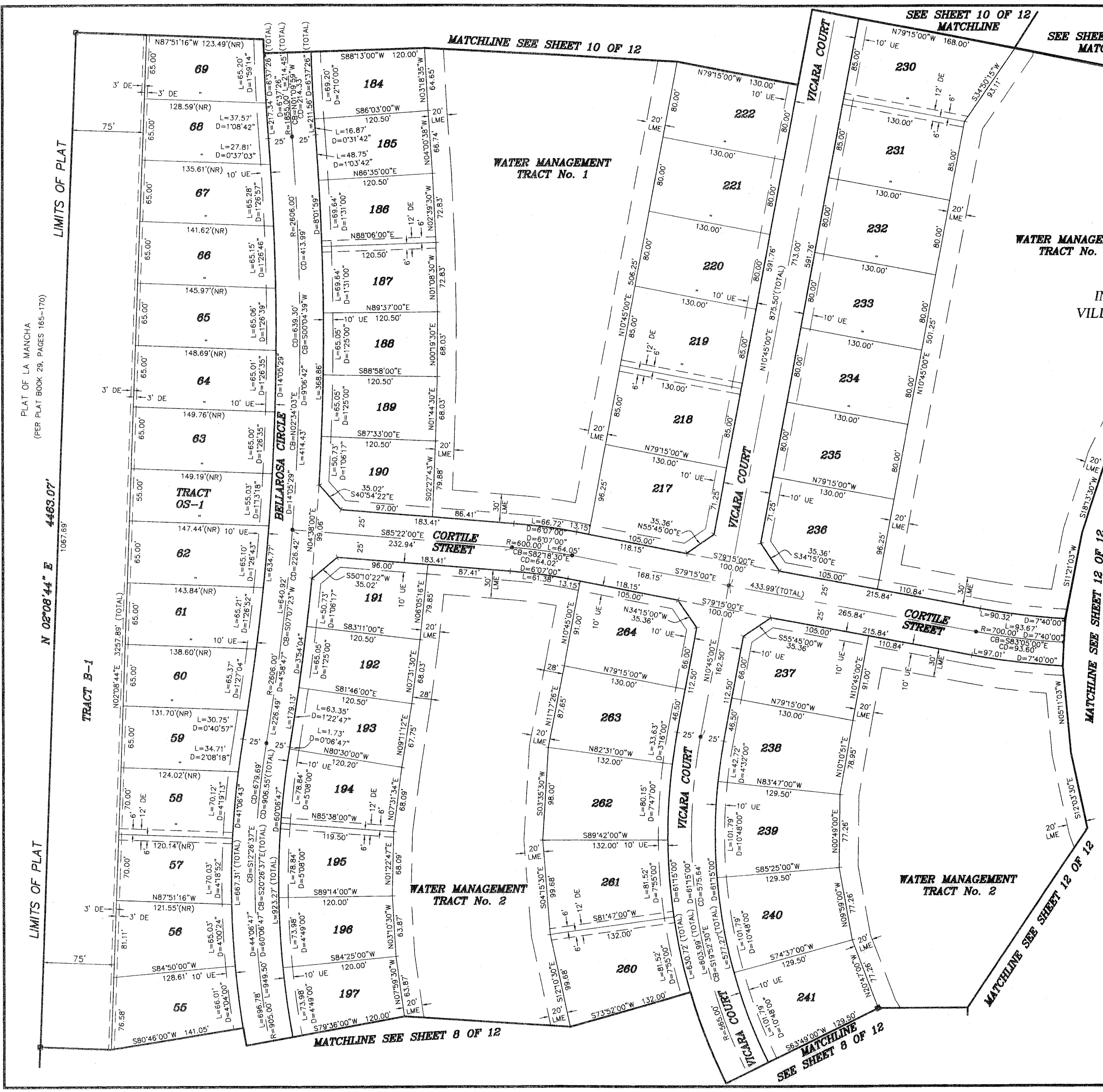
### PORTOSOL

IN SECTIONS 13 AND 24, TOWNSHIP 43 SOUTH, RANGE 41 EAST, VILLAGE OF ROYAL PALM BEACH, PALM BEACH COUNTY, FLORIDA

MAY 2007  
SHEET 9 OF 12



<b>PORTOSOL</b>	
<b>NMI</b> NICK MILLER, INC. 2560 RCA BLVD, STE 105, PALM BEACH GARDENS, FL 33410 TEL: 561.627.5200 FAX: 561.627.0983 www.nickmillerinc.com D.B.P.R. BUSINESS LICENSE No. 4318	SHEET NO. 9 OF 12 SCALE: 1" = 50' DATE: MAY 2007 JOB NO. 1038.004 FILE: 1038.004.DWG



PLAT OF LA MANCHA  
(PER PLAT BOOK 29, PAGES 165-170)

N 02°08'44" E 4463.07'

TRACT B-1

LIMITS OF PLAT

LIMITS OF PLAT

MATCHLINE SEE SHEET 8 OF 12

MATCHLINE SEE SHEET 10 OF 12

SEE SHEET 10 OF 12  
MATCHLINE

SEE SHEET 11 OF 12  
MATCHLINE

MATCHLINE SEE SHEET 12 OF 12

SEE SHEET 8 OF 12

WATER MANAGEMENT  
TRACT No. 1

WATER MANAGEMENT  
TRACT No. 1

WATER MANAGEMENT  
TRACT No. 2

WATER MANAGEMENT  
TRACT No. 2

NORTH